

INDUSTRY PROFILE

agribusiness



"We've processed cucumbers and peppers here since 1923, and we enjoy reliable, abundant water and superior waste water management. The Great Lakes Bay Region is known for growing things and building things, which means we draw from ample raw materials and manufacturing expertise." *Tim Hausbeck, CEO, Hausbeck Pickles & Peppers*



PROCESSING & TECH*

- Total jobs 4,881
- Businesses 291
- Average Earnings \$53,756
- Earnings (2020) \$349.9M
- \$198.7M Property Income (2020)
- Job Growth 6% Projected Growth (2020 - 2025)
- Location Quotient 1.16

FOOD PROCESSORS**

- Michigan Sugar Company
- Bay View Foods
- Hausbeck Pickles and Peppers
- Adm Edible Bean Specialties
- Star of the West Milling
- Michigan Agricultural Commodities
- ZFS Ithaca
- Corteva
- 291 Total Establishments

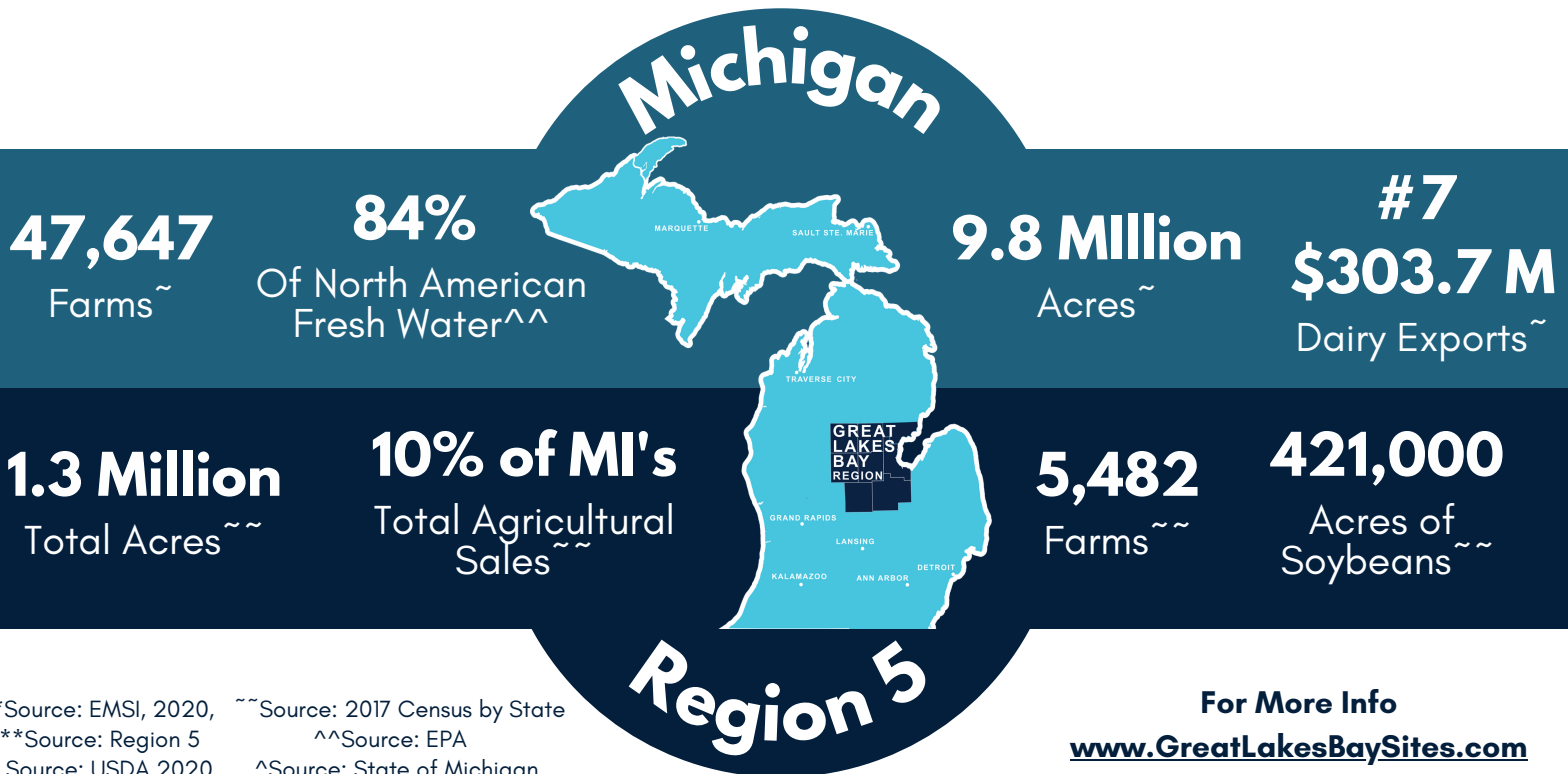


SUPPLY CHAIN*

- Truck Transportation 193
- Warehouse and Storage 20
- Deep Water Port, Rail, River
- Package and Labeling 2
- Industrial Machinery Manufacturing 16

PRO BUSINESS^

- No Inventory Tax
- Corporate Tax 6%
- Personal Income Tax 4.25%



*Source: EMSI, 2020, [~]Source: 2017 Census by State
 **Source: Region 5 ^{^^}Source: EPA
[~] Source: USDA 2020 [^]Source: State of Michigan

For More Info
www.GreatLakesBaySites.com



GREAT LAKES BAY

Michigan. Centered.

Arenac | Bay | Clare | Gladwin | Gratiot |
Isabella | Midland | Saginaw Counties

Saginaw Control & Engineering, manufacturing standard stock and custom designed electrical enclosures.

MICHIGAN'S
WORKFORCE
**IS TOP 10 IN US
FOR SKILLED TRADES**

**TOP 10
PRO-BUSINESS STATE**

PIONEERS OF INDUSTRY
HOME TO DOW, NEXTEER,
DUPONT, CORTEVA,
AMERICAN MITSUBA,
HEMLOCK SEMICONDUCTOR,
AIRCRAFT PRECISION PRODUCTS
& 900+ MORE

GO PLACES

- 3 hrs
ANN ARBOR
DETROIT
GRAND RAPIDS
LANSING
- 4 hrs
CLEVELAND
FORT WAYNE
- 5 hrs
CHICAGO
CINCINNATI
INDIANAPOLIS
TORONTO

LET'S FIND A LOCATION THAT WORKS FOR YOU

We embody **Midwestern spirit and grit.**
Here, our businesses value strong communities, knowing their neighbors, and putting in an honest day's work. Just like our people do.

That means we get business done with talent that is **proven, steadfast** and **seasoned** by hard work.

.....

Discover Great Lakes Bay | greatlakesbaysites.com

