



**GREAT**  
opportunities.  
resources.  
workforce.  
lifestyle.

**SAGINAW COUNTY** IS YOUR GREAT OPPORTUNITY



## Content

Great Location Great Resources	3
Population	4
Workforce	6
Industry	9
Business Community	12
International	15
Transportation & Infrastructure	16
Education	18
Cost of Living	20
Housing	21
Communities	22
Health Care	26
Public Safety	27
Water & Weather	28
Sports & Recreation	29
Arts & Culture	30
Shopping & Entertainment	31



### LOCATION

Saginaw Future Inc.  
515 N. Washington Ave.,  
3rd Floor  
Saginaw, MI 48607 US



### LINKS

[www.SaginawFuture.com](http://www.SaginawFuture.com)  
[www.GreatLakesTechnologyPark.com](http://www.GreatLakesTechnologyPark.com)  
[www.GreatLakesBaySites.com](http://www.GreatLakesBaySites.com)  
[@SaginawFuture](https://www.facebook.com/SaginawFuture)



### HELP DESK

P: 989-754-8222  
[info@SaginawFuture.com](mailto:info@SaginawFuture.com)



## GREAT LOCATION GREAT RESOURCES

**Saginaw County is located in the central portion of Michigan's Lower Peninsula and is part of the Great Lakes Bay Region (GLBR).** It is a regional urban center with a population of nearly 200,000 and is the home to Saginaw Valley State University and Central Michigan University College of Medicine. Saginaw County features 148 acres of FREE shovel-ready land at the Great Lakes Tech Park. The global headquarters of Hemlock Semiconductor, Duro-Last Roofing and Nexteer Automotive's Global Technology Center are all located here. Saginaw is an ideal intermodal location intersected by I-75, serviced by MBS International Airport, linked to the St. Lawrence Seaway and has multiple rail options.

The GLBR is made up of Arenac, Bay, Clare, Gladwin, Gratiot, Isabella, Midland and Saginaw Counties and features:

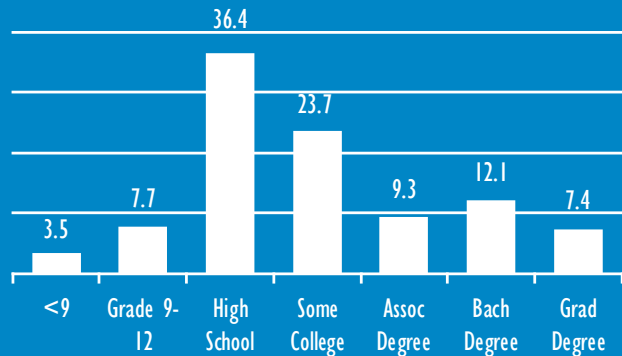
- Population just over half a million
- Home to five universities and two community colleges
- \$14 million recently invested in STEM education initiatives at the college level
- One of the nation's highest concentrations of PhDs and registered patents per capita
- 900 small to medium sized manufacturing operations
- Legacy manufacturing workforce with Midwestern work ethic
- Nationally-recognized workforce sourcing and technical training programs available at no cost to employers
- Continued investment from global industry leaders such as Dow, Hemlock Semiconductor and Nexteer Automotive
- Innovation supported through corporations, medical complexes, educational institutions and more than half a dozen independent research and innovation organizations
- Affordability of land and resources
- Access to Lake Huron, Saginaw Bay and the Saginaw River and the second largest seaport in Michigan



## POPULATION

Saginaw County and the Great Lakes Bay Region (GLBR) are home to more than 560,000 residents. Regional educational attainment is one of the highest priorities for local leaders and growth continues. Saginaw Valley State University has hosted the FIRST Robotics Competition State Championship the past two years, drawing thousands of high school competitors.

GLBR Educational Attainment %



Source: U.S. Census Bureau, 2013-2017 American Community Survey 5-Year Estimates



# 329,736

Age 20-64 Population for GLBR

# 258,304

In Labor Force for GLBR

# 57.8%

Core Working Age 20-64 for GLBR

Source: U.S. Census Bureau, 2017 American Community Survey

AREA	Population*	College Degrees~*	High School Grad or Higher*	Business Establishments**
Saginaw County	193,803	30.8%	88.8%	4,261
Great Lakes Bay Region	565,692	28.8%	88.9%	11,945

~Includes Associate's, Bachelor's and Graduate Degrees  
 \*Source: U.S. Census Bureau, 2017 American Community Survey \*\*2016 County Business Patterns

## MEDIAN AGE

# 40.8

Saginaw County

# 42.2

Great Lakes Bay Region

Source: U.S. Census Bureau, 2017 American Community Survey

## MEDIAN HOUSEHOLD INCOME

# \$45,034

Saginaw County (\$1,322 Increase)

# \$43,737

Great Lakes Bay Region (\$1,106 Increase)

Source: U.S. Census Bureau, 2017 American Community Survey

## POPULATION

A growing economy, outstanding healthcare, low cost of living, award-winning schools, and diverse housing options are all available in Saginaw. Our Region has a vibrant, big-city feel with small city expenses and charm!

HOUSEHOLD INCOME	SC	GLBR
Total Households	78,482	226,551
Less than \$10,000	9.2%	9.1%
\$10,000 to \$14,999	6.0%	6.4%
\$15,000 to \$24,999	12.0%	13.1%
\$25,000 to \$34,999	12.4%	12.1%
\$35,000 to \$49,999	15.7%	15.7%
\$50,000 to \$74,999	17.7%	18.5%
\$75,000 to \$99,999	11.7%	10.9%
\$100,000 to \$149,999	10.0%	9.2%
\$150,000 to \$199,999	2.6%	2.6%
\$200,000 or more	2.7%	2.5%

Source: U.S. Census Bureau, 2017 American Community Survey

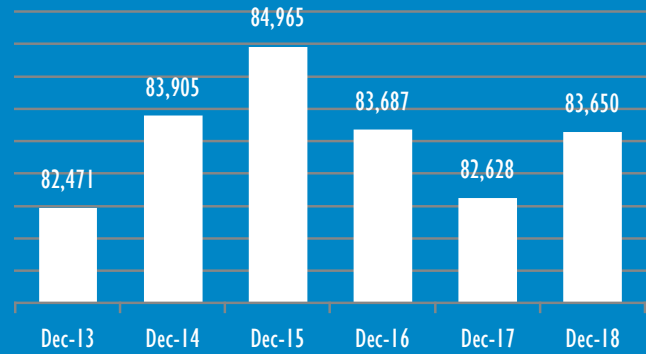


## WORKFORCE

The Region is home to one of the highest per-capita concentrations of Ph.D. professionals in the U.S. – offering one of the country’s richest pools of science/engineering talent. From fiscal services to supply management, we have well-trained and experienced people.

The Region continually tops the charts for most registered patents per capita in the U.S.

Saginaw County Employed Labor



Source: U.S. Bureau of Labor Statistics



SAGINAW  
COUNTY

GREAT LAKES  
BAY REGION

58% 62%  
White Collar

42% 38%  
Blue Collar

Source: Applied Geographic Solutions, 2018

AREA	Labor Force	Unemployment Rate	Avg. Commute Time
Saginaw County	87,588	4.5%	21.7 minutes
Great Lakes Bay Region	258,304	5.0%	24.0 minutes

Sources: U.S. Bureau of Labor Statistics, Dec. 2018 Preliminary; U.S. Census Bureau, 2017 American Community Survey





EMPLOYEES BY INDUSTRY	Saginaw County	GLBR
Agriculture, Forestry, Fishing & Hunting	353	1,625
Mining	80	416
Construction	2,888	9,270
Manufacturing	12,036	30,084
Wholesale Trade	1,989	5,200
Retail Trade	11,177	26,229
Transportation and Warehousing	1,885	4,247
Information	1,292	2,389
Finance and Insurance	2,743	5,739
Real Estate and Rental and Leasing	659	1,904
Professional and Technical Services	2,338	5,874
Management of Companies and Enterprises	350	3,560
Administrative and Waste Services	7,790	13,913
Educational Services	361	1,650
Health Care and Social Assistance	15,046	33,627
Arts, Entertainment, and Recreation	877	2,711
Accommodation and Food Services	8,102	20,113
Other Services (except Public Admin.)	2,523	8,067
Unclassified	75	198

Source: MI DTMB LMISI Quarterly Census of Employment and Wages,

## WORKFORCE DEVELOPMENT

**Delta College Fast Start Training Programs** - are powerful, unique partnerships between your business, Great Lakes Bay Michigan Works! and Delta College, providing pools of potential trained employees. Those programs include Chemical Process Operator, Computer Numeric Control (CNC), Customer Service, Diesel Technician and Manufacturing Assembly. [www.delta.edu/workforce-training/fast-start.html](http://www.delta.edu/workforce-training/fast-start.html)

**Delta College Corporate Services** - is located in the heart of the Great Lakes Bay Region and provides customized employee technical training, organizational development training, and customized pre-hire training programs to meet business demands. [www.delta.edu/workforce-training/index.html](http://www.delta.edu/workforce-training/index.html)

**Saginaw Career Complex** – is the Career and Technical Education Center for Saginaw County offering 19 programs that prepare students for college, advanced technical training or skilled entry-level work. [www.spsd.net/scc](http://www.spsd.net/scc)

**Saginaw County Business & Education Partnership** – is a collaboration of business leaders and educators to improve and increase workforce skills; the Career Ladders initiative gives students and adults career preparation and advancement skills in advanced manufacturing. [www.scbep.com](http://www.scbep.com)

**Education and Training Connection** – delivers training and assessment to Michigan Businesses. Its experienced staff works with adults in education and training environments. [www.etc-l.com](http://www.etc-l.com)

**Great Lakes Bay Michigan Works!** – provides employment services directly to employers. Services include employee recruitment, screening, interview facilities, skills testing, custom training. The Michigan Talent Bank is a free internet-based resume and job bank available to employers. [www.michiganworks.com](http://www.michiganworks.com)

**International Brotherhood of Electrical Workers (IBEW) Local 557 / NECA** – provides electrical apprenticeship and training. The program combines in-class knowledge and on-the-job training with electrical contractors. <http://mi.aficio.org/mid-michigan-area-labor-council>

**Saginaw Valley State University College of Science, Engineering & Technology** - provides undergraduate programs in biology, chemistry, physics, engineering, mathematics, and computer science, as well as a graduate program in energy & materials. [www.svsu.edu/collegeofscienceengineeringtechnology](http://www.svsu.edu/collegeofscienceengineeringtechnology)

**Saginaw Valley State University Business Resource & Development Center** - is home to the Michigan Manufacturing Technology Center – Northeast, Office of Continuing Education and Professional Development, Independent Testing Laboratory, Saginaw Valley Research and Development Corporation, Great Lakes Bay Manufacturers Association and The Stevens Center for Family Business. [www.svsu.edu/brdc](http://www.svsu.edu/brdc)

**Michigan Economic Development Corporation Job Portal** – is for skilled job seekers and employers. [www.mitalent.org](http://www.mitalent.org)

**National Career Readiness Certificate** – is a credential to verify to U.S. employers that an individual has essential employability skills in Reading for Information, Applied Mathematics, and Locating Information. [www.act.org/content/act/en/products-and-services/workforce-solutions/act-national-career-readiness-certificate.html](http://www.act.org/content/act/en/products-and-services/workforce-solutions/act-national-career-readiness-certificate.html)

**U.A. Local 85 Journeyman & Apprenticeship of the Pipefitting and Plumbing Industry** - covers the installation of commercial and industrial progress piping systems. A welding certification is also available. [www.ualocal85.org/Apprenticeships.aspx](http://www.ualocal85.org/Apprenticeships.aspx)



## INDUSTRY



**Advanced Manufacturing** Saginaw County and the Region have been global manufacturing leaders for more than 150 years. We have developed a great infrastructure for manufacturing: road, rail, air and water transportation ... data communications and support... and a powerful service and supply network. More importantly, though, manufacturing is part of our Region's DNA. Every part of the community is in tune with the specialized needs of manufacturers.

---



**Automotive** We understand automotive manufacturing! Saginaw is at the center of the global automotive market and Saginaw manufacturers, like Nexteer Automotive, are experts in precision tooling, specialty fabrication and prototype development.

---



**Medical** Saginaw County is where everything comes together for manufacturers of medical equipment and devices. We have leaders in intellectual property development, clinical trials, prototype development and manufacturing deployment. We are a major healthcare hub with a medical school and a source for high-tech raw materials and products.

---



**Agribusiness** With 1,250 farms, Saginaw County was 3rd in Michigan for corn and soy production, 4th in Sugarbeets, and was one of the top 10 counties in wheat production. We are home to Star of the West Milling Co., Hausbeck Pickle Company and additional food processors.

---



**Professional Services** Saginaw County is a Regional service area for Professional Services, such as accounting and legal specialties, and engineering and architectural firms. Saginaw County is home to Morley Companies, Inc., Andrews Hooper & Pavlik P.L.C., Rehmann and Yeo & Yeo CPAs & Business Consultants, and has regional and statewide IT service firms.

---



**Accommodation and Retail** The Saginaw economy greatly benefits from many shopping opportunities. Recently the Michigan Travel Bureau ranked Saginaw County the Number 3 County for Tourism Revenue in the State of Michigan. Birch Run and Frankenmuth are two of the top Michigan destinations.

## INDUSTRY

SAGINAW MSA OCCUPATIONS	Employed	Median Annual Wage
All Occupations	85,400	\$33,860
Management Occupations	3,090	\$87,380
Business and Financial Operations Occupations	3,080	\$56,250
Computer and Mathematical Occupations	930	\$60,820
Architecture and Engineering Occupations	1,120	\$66,440
Life, Physical, and Social Science Occupations	190	\$61,300
Community and Social Service Occupations	1,160	\$43,710
Legal Occupations	270	\$60,030
Education, Training, and Library Occupations	3,710	\$51,050
Arts, Design, Entertainment, Sports, and Media Occupations	610	\$38,990
Healthcare Practitioners and Technical Occupations	7,140	\$61,690
Healthcare Support Occupations	3,620	\$27,530
Protective Service Occupations	1,370	\$34,300
Food Preparation and Serving Related Occupations	8,010	\$20,890
Building and Grounds Cleaning and Maintenance Occupations	3,370	\$27,470
Personal Care and Service Occupations	2,430	\$22,710
Sales and Related Occupations	11,060	\$24,560
Office and Administrative Support Occupations	12,860	\$31,380
Farming, Fishing, and Forestry Occupations	30	\$34,200
Construction and Extraction Occupations	3,210	\$46,370
Installation, Maintenance, and Repair Occupations	3,990	\$44,340
Production Occupations	9,020	\$36,090
Transportation and Material Moving Occupations	5,120	\$30,030

Source: Bureau of Labor Statistics, Occupational Employment Statistics

## INDUSTRY

THREE YEAR SAGINAW COUNTY INDUSTRY EMPLOYMENT	2016	2017	2018
Total Nonfarm	88,600	87,900	87,800
Total Private	77,700	77,000	76,700
Goods Producing	15,500	15,400	15,500 ↑
Service Providing	73,200	72,600	72,300
Private Service Providing	62,300	61,600	61,300
Mining, Logging and Construction	2,800	2,900	3,000 ↑
Manufacturing	12,600	12,400	12,400 ↔
Durable Goods	11,500	11,400	11,400 ↔
Transportation Equipment	5,400	5,400	5,400 ↔
Trade, Transportation and Utilities	17,200	16,900	16,700
Wholesale Trade	2,300	2,200	2,100
Retail Trade	12,500	12,200	12,000
Transportation and Warehousing	2,500	2,500	2,700 ↑
Information	1,400	1,300	1,300 ↔
Financial Activities	3,700	3,700	3,700 ↔
Professional and Business Services	11,200	11,300	11,200
Educational and Health Services	16,200	16,100	16,000
Leisure and Hospitality	9,200	9,000	9,100 ↑
Other Services	3,300	3,300	3,300 ↔
Government	10,900	10,900	11,000 ↑
Federal Government	1,500	1,500	1,500 ↔
State Government	2,800	2,800	2,900 ↑
Local Government	6,600	6,700	6,700 ↔

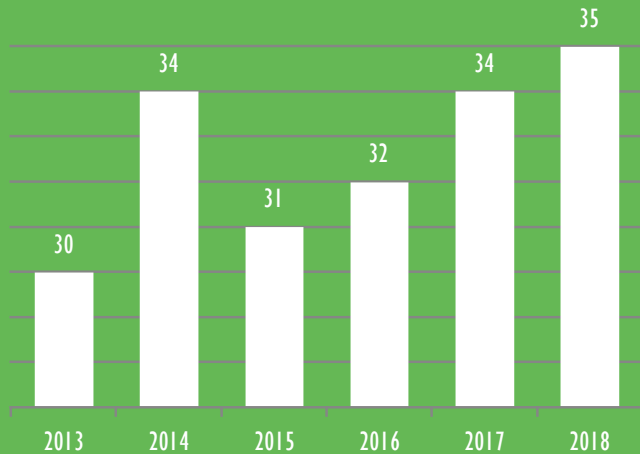
Source: Michigan DTMB, Labor Market Information, Current Employment Estimates By Industry - CES



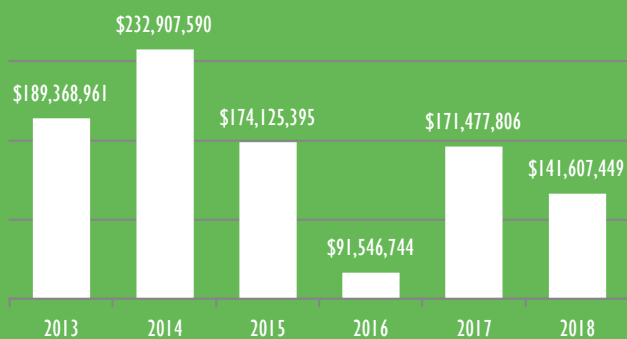
# BUSINESS COMMUNITY

In 2018, according to Site Selection's Conway Projects Database, the Saginaw Metro Area was tied for 10th with 6 corporate facility projects in Metros with Population Less Than 200,000. Saginaw was 9th in 2017.

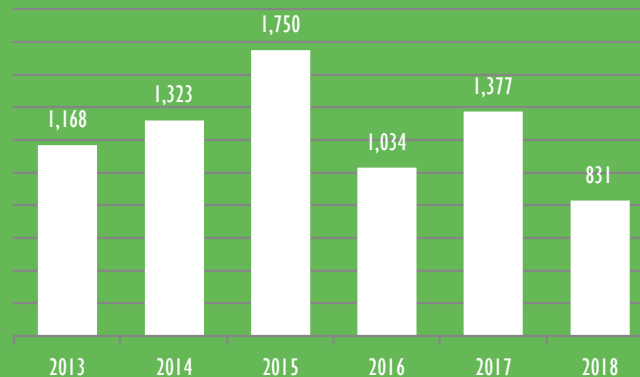
## Development Projects



## New Investment



## Jobs Created and Retained



2018 Expansions	Investment	Jobs Created or Retained
A&B Equipment & Sons, Inc.	\$500,000	~
Acoustical Land LLC & RollerGard LLC	\$2,000,000	~
B&P Littleford	\$800,000	10
Bayne's Apple Valley	\$575,000	35
Cignys	\$171,849	144
Dixie Highway Reconstruction	\$3,000,000	131
Duperon Corporation	~	8
Extreme Arts/Shaaheen Development	\$28,500	15
Frankenmuth Chees Haus	\$6,442,000	25
Fullerton Tool Company	\$2,300,000	9
Great Lakes Bay Health Centers	\$875,000	~
Hausbeck Pickle Company	\$475,300	15
Kapex Manufacturing, LLC	\$300,000	1
Michigan Unemployment Insurance Agency Shaaheen Development	\$1,000,000	100
Mobile Medical Response	\$570,000	35
Morley Companies, Inc.	\$858,000	115
Nexteer Automotive	\$60,000,000	~
Orchid Orthopedic Solutions-Bridgeport, MI	\$472,500	~
Orchid Orthopedic Solutions-Bridgeport, MI	\$2,000,000	21
Saginaw Control & Engineering	\$28,000,000	35
Saginaw Covenant Academy	\$1,200,000	20
Sargent Docks and Terminal	\$1,000,000	4
Solutions 4 Automation	\$502,000	30
Superior Vault Company	\$150,000	1
T.M. Klein & Sons	\$200,000	20
Turn One	\$176,000	1
UmbraGroup	~	6
Vineyards Management Group	\$21,000,000	3
W. Soule	\$150,000	7
<b>TOTAL</b>	<b>\$134,746,149</b>	<b>791</b>
2018 Attractions	Investment	Jobs Created or Retained
AI Mobile Storage Leasing	\$20,000	10
Ann Arbor Builders, Inc./Case Block	\$1,000,000	~
Ann Arbor Builders, Inc./Lee Mansion	\$200,000	~
DTE Energy	\$5,430,000	~
Honey B's Eatery	\$103,000	13
T-And-S Construction	\$108,300	17
<b>TOTAL</b>	<b>\$6,861,300</b>	<b>40</b>

## SAGINAW FUTURE IS...

Saginaw Future is in the business of generating new investment and job growth in Saginaw County, MI, U.S.



Established in 1992, SFI is a private, nonprofit alliance of local businesses, the Saginaw County Chamber of Commerce, the County and City of Saginaw, 16 local municipalities, labor organizations and local foundations. Saginaw Future assists companies with Financial and Incentive Packaging, identifying State Business Opportunity Programs, Government Contracting, Site Location

We have worked closely with the SFI team on numerous occasions, they have been a valuable partner in our business strategies, especially when they supported us in new capital investment plans.

Saginaw Future assisted with our new Fullerton Tool West facility at the Great Lakes Tech Park.

*Patrick Curry, President, Fullerton Tool Company Inc.*

Assistance, Shovel-ready FREE land, Industrial Site Development, Business Advocacy and Community Liaison assistance, Workforce Development needs and more!

Saginaw Future is only one of 62 economic development organizations accredited by the International Economic Development Council as an Accredited Economic Development Organization. Saginaw Future has eight staff members who are advised by a 27 member Board of Directors.

## GREAT LAKES BAY REGION PRIMARY EMPLOYERS

County(s)	Employer Name	Employees	Type of Business
Region	The Dow Chemical Company	6,077	Manufacturing
Saginaw	Nexteer Automotive	5,200	Automotive
Saginaw	Covenant HealthCare	4,800	Medical
Region	MidMichigan Medical Center	4,714	Health Care
Isabella	Saginaw Chippewa Tribe	3,602	Entertainment, Commercial
Isabella, Saginaw	Central Michigan University	2,994	Education
Region	Meijer	2,813	Department Store
Bay, Isabella	McLaren Health Care	2,786	Health Care Services
Saginaw	Morley Companies, Inc.	2,500	Display, Interactive Services, Travel
Saginaw	St. Mary's of Michigan	1,900	Medical
Region	Wal-Mart	1,602	Department Store
Saginaw	Frankenmuth Bavarian Inn Inc.	1,000	Restaurant, Hotel
Bay, Saginaw	Michigan Sugar	900	Sugar Beet Processing
Bay, Saginaw	General Motors Powertrain	868	Automotive Components
Saginaw	Hemlock Semiconductor	850	Polycrystalline Silicon, Solar
Isabella	Delfield	693	Food Equipment Manufacturer
Midland	Greater Midland	690	Arts, Entertainment, and Recreation
Saginaw	Fashion Square Mall	650	Retail
Saginaw	Frankenmuth Insurance	646	Insurance
Midland	Huhtamaki Plastics	550	Manufacturing
Gratiot, Saginaw	Merrill Technologies Group	527	Machining
Isabella	Morbark, LLC	507	Machining manufacturer
Saginaw	Zehnder's of Frankenmuth	503	Restaurant
Isabella	McBride Quality Care	500	Adult day care center
Gratiot	International Automotive Components (IAC)	496	Automotive
Gratiot	Masonic Pathways	496	Medical
Isabella	Bandit Industries	425	Construction equipment supplier
Gratiot	Avalon & Tahoe Mfg., Inc.	320	Pontoon Boat Manufacturer
Clare	Lear Corporation	263	Automotive
Clare	Basic Communications	250	High Speed Communications
Gladwin	Brown Machine	228	Manufacturing
Clare	The Rogers Group	225	Sports, Entertainment, Food Preservation
Gladwin	Saint-Gobain	220	Manufacturing
Clare	Northern Logistics	188	Shipping
Gladwin	Loose Plastics	120	Manufacturing
Arenac	Vantage Plastics	115	Manufacturing
Gladwin	East Jordan Plastics	100	Manufacturing
Arenac	Magline	82	Manufacturing

List includes full-time equivalent employees only. Reasonable efforts have been made to ensure accuracy of the information, if your company or organization is not listed or if the information has changed recently, please contact your economic development organization.

## SAGINAW COUNTY PRIMARY EMPLOYERS

Employer Name	Employees	Type of Business
Nexteer Automotive	5,200	Automotive
Covenant HealthCare	4,800	Medical
Morley Companies, Inc.	2,500	Display, Interactive Services, Travel
St. Mary's of Michigan	1,900	Medical
Meijer	1,425	Department Store
Saginaw Valley State University	1,056	Education
Frankenmuth Bavarian Inn Inc.	1,000	Restaurant, Hotel
Aleda E. Lutz Veteran Affairs Medical Center	967	Medical
Hemlock Semiconductor	850	Polycrystalline Silicon, Solar
Saginaw ISD	670	Education
County of Saginaw	660	Government
Fashion Square Mall	650	Retail
Frankenmuth Insurance	646	Insurance
Saginaw Public Schools	638	Education
Saginaw Township Community Schools	521	Education
HealthSource Saginaw	510	Medical
Wal-Mart	505	Retail
Zehnder's of Frankenmuth	503	Restaurant
General Motors Powertrain - SMC	476	Automotive
Consumers Energy	420	Energy
City of Saginaw	413	Government
Birch Run Prime Outlets	410	Retail
Merrill Technologies Group	405	Machining
Duro-Last, Inc. / Plastatech Engineering Ltd.	400	Roofing Systems & Vinyl
Orchid Bridgeport	386	Medical Manufacturer
Saginaw County Community Mental Health Authority	368	Medical
Great Lakes Bay Health Centers	346	Medical
CMU Healthcare/CMU Medical Education Partners	301	Medical
MBS International Airport	300	Travel, Shipping
Saginaw Correctional Facility	295	Corrections
United States Post Office	291	Mail, Shipping
Wellspring Lutheran Services	267	Health Care
Bronners CHRISTmas Wonderland	249	Retail / Tourism
Means Industries	248	Auto Stampings
Saginaw Control & Engineering	237	Electronic Controls
Hehr International Inc.	223	Glass Products
Mobile Medical Response	208	Emergency Transportation
Stone Transport LP	208	Shipping
Glastender, Inc.	201	Metal Fabricator, Manufacturer
Meggitt - Thomson Aerospace & Defense	184	Manufacturing
Fullerton Tool Company, Inc.	163	Tool Grinding Service

List includes full-time equivalent employees only. Reasonable efforts have been made to ensure accuracy of the information, if your company or organization is not listed or if the information has changed recently, please contact Saginaw Future Inc.



# INTERNATIONAL



**SISTER UNIVERSITY**  
Saginaw Valley  
State University  
- Jinan University in  
Guangzhou, China  
[www.jnu.edu.cn](http://www.jnu.edu.cn)



**JAPANESE CULTURAL  
CENTER, TEA HOUSE  
AND GARDENS OF  
SAGINAW**  
one of the most authentic  
tea houses in North America  
[www.japaneseculturalcenter.org](http://www.japaneseculturalcenter.org)



## STATE AND GREAT LAKES BAY REGION SISTER CITIES

Michigan	Sichuan Province, China
Bay City	Ansbach, Germany; Goderich Ontario; Lome, Togo; Poznan, Poland
Frankenmuth	Gunzenhausen, Germany
Midland	Zigon, China
Mount Pleasant	Okaya, Japan; Valdivia, Chile
Saginaw	Awka, Nigeria; Tokushima, Japan; Zapopan, Mexico

## INTERNATIONAL

# INVESTMENT

## HIGHLIGHTS



GERMANY	KUKA Assembly and Test Corp. - was acquired in 1999
CHINA	Nexter Automotive - was purchased in 2010 by Pacific Century Motors
JAPAN	Hemlock Semiconductor - composed of joint ventures owned by Dupont, Corning Inc. and Shin-Etsu Handotai
INDIA	Tata Consultancy Group - partially owned by Tata Consultancy Services and Dow Chemical
ITALY	Thomson Aerospace (Meggitt) - purchased by the Umbra Group

Nearby Canadian Border Crossings

# 3

**Blue Water Bridge:** Port Huron, MI to Point Edward and Sarnia, Ontario, 104 mi/167 km

**Ambassador Bridge:** Detroit, MI to Windsor, Canada, 105 mi/169 km

**Detroit - Windsor Tunnel:** Detroit, MI to Windsor, Canada, 102 mi/165 km

## PROGRAM

# EB-5

The EB-5 Program allows foreigners to obtain two-year US Green Cards by investing a minimum of US \$1 million (or US \$500,000 if the projects is located in a "Targeted Employment area"). Within five years, investors and families can begin the Naturalization process to become official US citizens.



# TRANSPORTATION & INFRASTRUCTURE

The Great Lakes Bay Region provides robust intermodal infrastructure including rail, seaway, state highways, interstate and International airport. Businesses have access to Lake Huron, the Saginaw Bay and Saginaw River and the second largest seaport in Michigan.

500 miles or  
805 kilometers

to half of the US and  
Canadian markets

9 Business  
Parks

in Saginaw County alone,  
including the FREE Great  
Lakes Tech Park (pg. 17)

Nearly  
8 million

square feet of Regional  
building space ready for  
development

**[www.GreatLakesBaySites.com](http://www.GreatLakesBaySites.com) is an online property database that is designed to assist companies seeking to expand or open a new location in the Great Lakes Bay Region, MI, U.S.** The property database includes eight counties – Arenac, Bay, Clare, Gladwin, Gratiot,

Isabella, Midland and Saginaw Counties. It features available industrial, commercial, office and retail properties. [www.GreatLakesBaySites.com](http://www.GreatLakesBaySites.com) also provides specific demographics and mapping capabilities for properties, municipalities, counties and the overall Region.

## TRANSPORTATION & INFRASTRUCTURE



**Highway Interstate 75** bisects Saginaw County and the Great Lakes Bay Region as well as the country, linking the Canadian and Mexican markets. Eight major state highways pass through Saginaw County, and 15 through the Region. They provide direct links to all of Michigan's major cities and northern vacation destinations, along with competitive highway freight opportunities.

---



According to the U.S. Bureau of Labor Statistics, there are **90 Transportation and Warehousing** establishments in Saginaw County with 1,885 employees and includes 55 Saginaw County Truck Transportation companies. Class I rail transit is available for the U.S., Canada and Mexico through CSX Transportation Inc. and Regional carriers, such as Lake State Railway.

---



**Seven airports are located in the Region** with MBS International Airport being the largest. MBS is serviced by Delta and United Airlines, which link to major hubs in Detroit, Chicago and Minneapolis. Additional flight services are provided in Saginaw County by Harry W. Browne Airport in Buena Vista Charter Township and the William "Tiny" Zehnder Field in Frankenmuth.

---



**MBS International Airport** provided air travel services to 255,449 people in 2018, which was a 36,257 increase. The airport's cargo routes are key supply linkages and distribution paths for many Regional businesses. MBS had 77,182 pounds of air carried cargo in 2018. MBS features its 75,000 sq. ft., \$55 million terminal that opened in the Fall of 2012.

---



The **Saginaw River shipping channel** provides linkage from commercial port facilities in the county to the St. Lawrence Seaway and ultimately to the Atlantic Ocean in three days' time. Thirty cargo docks provide access to the Saginaw River shipping channel, which is Michigan's eighth largest port by cargo volume with about 4.6 million tons of river commerce annually.

---



The **Great Lakes Tech Park** is a free 148-acre available, fiber and pad ready site with direct access to the global marketplace and a world-class workforce. Excellent incentives are available for prospective Park occupants. Located at the corner of two state highways, it is perfectly situated near many of the world's leading manufacturing, chemical, auto and renewable energy enterprises.



## EDUCATION

Public & Charter Elementary - Secondary Schools	Saginaw County	GLBR
Schools	76	212
Students	27,582	76,008
Full-Time Equivalent Teachers	1,495	4,177
Teacher to Student Ratio	18.5	18.4

Source: National Center for Education Statistics, 2016-2017

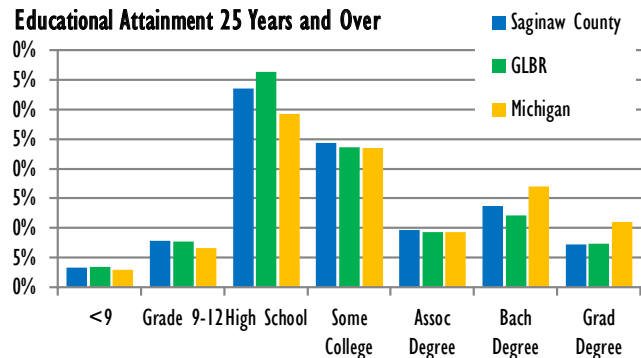
School Enrollment	Saginaw County	GLBR
Population 3 years and over	49,305	146,535
Nursery school, preschool	3,114	7,773
Kindergarten	2,398	6,433
Elementary school (grades 1-8)	18,705	52,352
High school (grades 9-12)	10,395	28,344
College or graduate school	14,693	51,633

Source: U.S. Census Bureau, 2013-2017 American Community Survey 5-Year Estimates

Degree	Certificate	Associates	Bachelor	Graduate & Plus	Post-Grad Certificate
Biological, Biomedical, Physical & Chemical Sciences	~	7	388	64	2
Business Management, Marketing & Related Support Services	35	344	2,692	1,269	176
Computers & Information Sciences & Support Services	3	55	260	125	19
Engineering Technologies & Engineering-Related Fields	3	42	225	32	~
Health Professions & Related Programs	100	647	958	481	15
Precision Production & Science Technologies /Technicians	44	35	~	11	~

Sources: National Center for Education Statistics, Fall 2017

### Educational Attainment 25 Years and Over



Source: U.S. Census Bureau, 2013-2017 American Community Survey 5-Year Estimates

Institution	2017 Fall Enrollment	County
Central Michigan University	23,257	Isabella, Saginaw
Saginaw Valley State University	8,617	Saginaw
Northwood University	3,353	Midland, Saginaw
Alma College	1,426	Gratiot
Davenport University (13 MI Locations)	7,160	Midland
Delta College	8,677	Bay
Mid Michigan Community College	4,048	Clare

Source: National Center for Education Statistics

## EDUCATION

To meet the needs of the new economy, the Great Lakes Bay Region has a developed educational infrastructure in place to benefit today's students. Comprehensive higher educational opportunities and technical skill programs are available through local universities, community colleges and technical schools. Saginaw County and the Great Lakes Bay Region has more than 56,000 students enrolled in local educational institutions who are the business leaders and workforce of tomorrow.



**Central Michigan University** is nationally recognized for academic excellence in more than 200 programs. Saginaw is home to the CMU College of Medicine that is training the next generation of physicians. [www.cmich.edu](http://www.cmich.edu)



**Saginaw Valley State University** has over 94 programs of study offered at the undergraduate and graduate level including the nation's first graduate program dedicated to multi-media technology. [www.svsu.edu](http://www.svsu.edu)



**Northwood University** is a private university that was founded with the purpose of developing leaders, managers, and entrepreneurs with the skills and character to drive success. [www.northwood.edu](http://www.northwood.edu)



**Alma College** is a private institution that was founded in 1886. It utilizes a 4-4-1-based academic calendar and its ranking in the 2019 edition of Best Colleges is National Liberal Arts Colleges, 143. [www.alma.edu](http://www.alma.edu)



**Davenport University** offers two and four year degrees, serves the Great Lakes Bay Region and strives to provide the highest quality education for success in business and medical fields. [www.davenport.edu](http://www.davenport.edu)

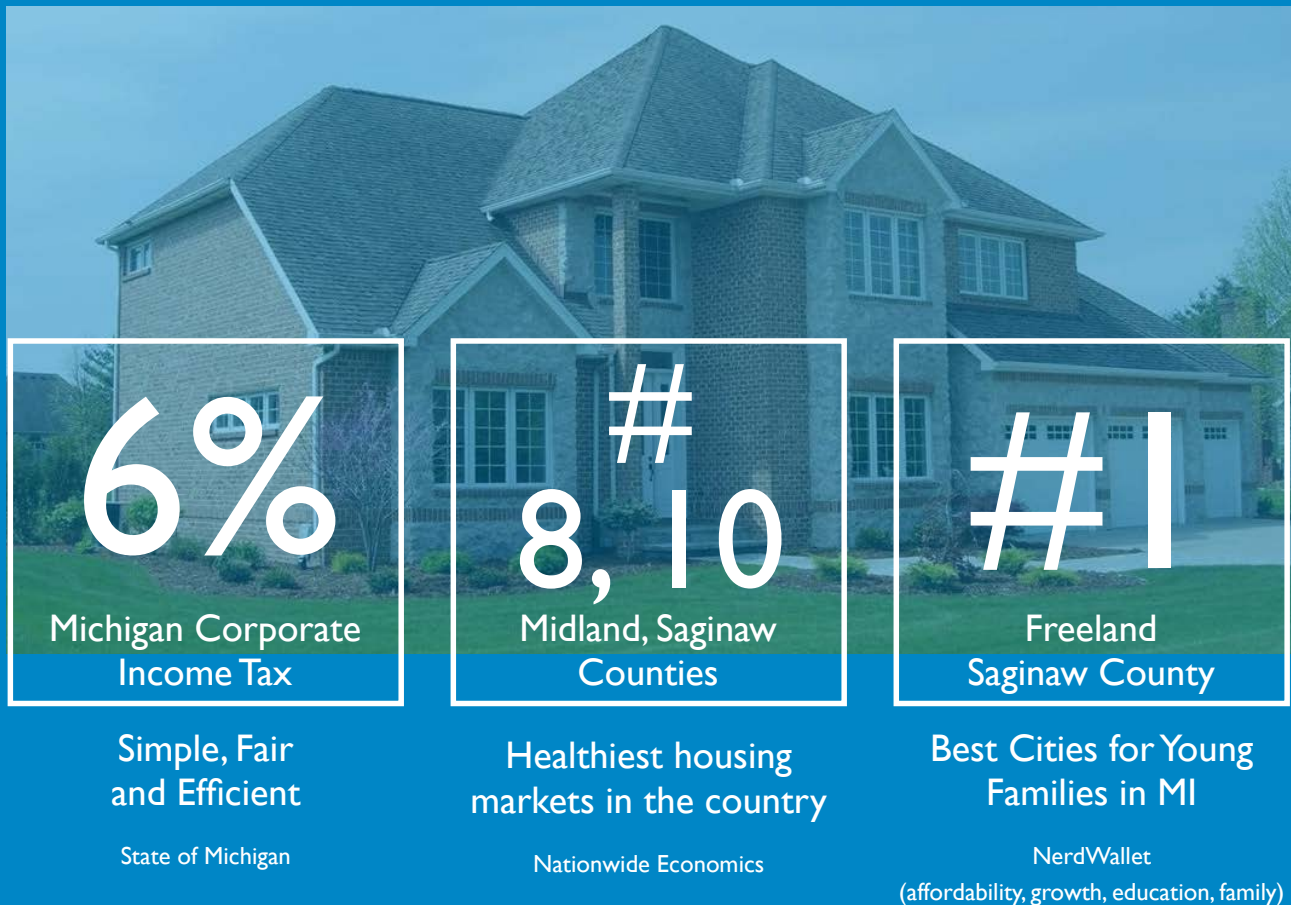


**Delta College** is a fully-accredited community college offering 150 transfer, career degree and certificate programs. Delta is known for excellent programs, technological innovation and community leadership. [www.delta.edu](http://www.delta.edu)



**Mid Michigan College** has been serving the community since 1965. With state-of the-art facilities, experienced faculty, and knowledgeable counselors, it offers over 50 programs. [www.midmich.edu](http://www.midmich.edu)

# COST OF LIVING



Michigan offers one of the best pro-business environments in the country.

We have been ranked one of the Top 10 states for corporate tax competitiveness due to our simple, fair and efficient 6% corporate income tax. It generated \$500 million in annual business savings through the elimination of industrial personal property

tax. According to Sperling's Best Places, Saginaw County overall cost of living is 86.8, which is 13.2% below the United States cost of living average of 100.

The City of Saginaw was recently ranked #23 and the City of Bay City was #13 for Business Costs out of 1,261 small-sized cities by WalletHub.

Saginaw is one of four

communities across the state of Michigan to have been identified for the strategies it employs to foster entrepreneurial growth and economic development, according to the annual eCities study. The study, conducted by iLabs, University of Michigan-Dearborn's Center for Innovation Research, identified Saginaw for its success and efforts in contributing to Michigan's growth.

# HOUSING

People who relocate here agree that Saginaw County provides sound affordable housing in a market that gives you multiple choices. The Saginaw housing market is one of the most affordable in the nation and the cost of living in the Great Lakes Bay Region is considered the most reasonable in the country.



## Numerous Saginaw Options

Building a Saginaw dream home is a reality. Saginaw County provides the opportunity to build a new home that fulfills your every need with new neighborhood development. Saginaw is a blend of urban and rural settings that suits almost any preference. City homes and quiet country residences are available

## Saginaw Easily Beats the National Average

Saginaw County offers you more for your money in housing compared to other areas in the country. According to the Zillow Home Value Index, the Current Median Home Listing Price in Saginaw County (\$74,000) was well below the national median of \$153,000. The median home value in

**Realtor.com ranks Saginaw as the sixth best place to age in place. The article focuses on the best “metros” for middle-aged people who are slowing down or who might have an empty nest.**

for more than reasonable costs. Convenience is another important factor and Saginaw delivers with a number of large homes within a short drive to Downtown Saginaw, shopping districts and MBS International Airport. For those interested in upscale urban settings – Saginaw has those properties too.

There are numerous apartment and condominium communities with some of the most reasonable rental fees in the state, with choices ranging from townhouses to rental homes.

Saginaw County is \$117,100. Saginaw County home values have gone up 10.0% over the past year and Zillow predicts they will rise 5.5% within the next year.

## Saginaw County 9th Most Affordable Market in the Nation

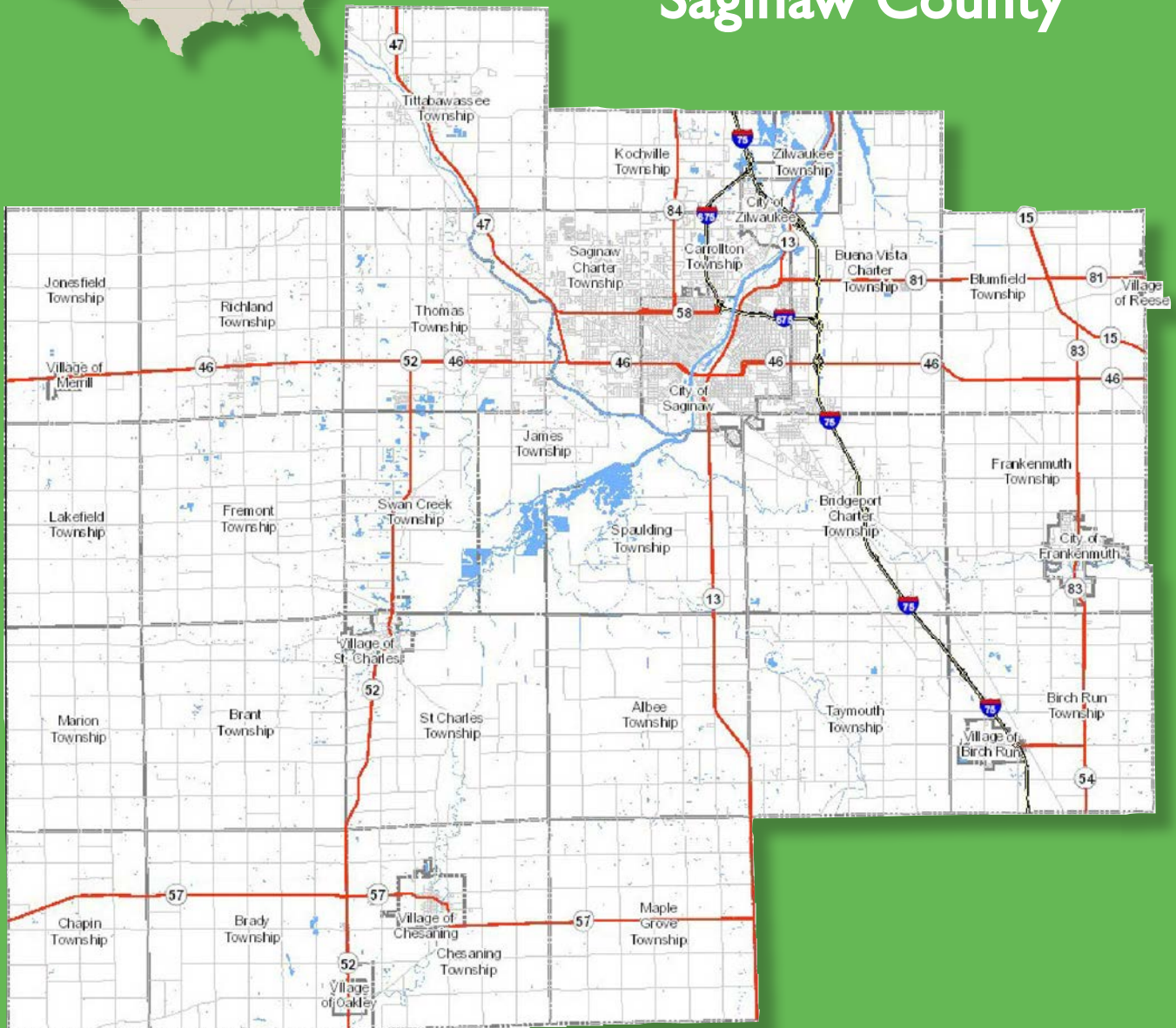
24/7 Wall St. reviewed county-level data from ATTOM Data Solutions. Counties were ranked based on the affordability ratio – median income needed to buy a house in the area relative to average annual wages.



# COMMUNITIES



## Saginaw County



## COMMUNITIES

### CITY OF SAGINAW

Zip Codes: **48601, 48602, 48604, 48605, 48607**

2017 Population: **49,366**

2017 Median Household Income: **\$29,809**

2017 Median Age: **35.7**

As a city on the riverfront, that flourishes from the culture and diversity of its neighborhoods and localities, Saginaw embodies many traditional American qualities such as hard work and home.



### BUENA VISTA CHARTER TOWNSHIP

Zip Codes: **48601**

2017 Population: **8,316**

2017 Median Household Income: **\$27,825**

2017 Median Age: **37.7**

Interstate 75 runs through Buena Vista and is a part of the Interstate System that runs from Miami, Florida, to Sault Ste. Marie in Michigan's Upper Peninsula. It is a gateway to recreational areas.

### SAGINAW CHARTER TOWNSHIP

Zip Codes: **48603, 48604, 48602, 48638**

2017 Population: **39,742**

2017 Median Household Income: **\$48,601**

2017 Median Age: **44.1**

Saginaw Township has all the amenities, opportunities and conveniences of a modern metropolitan area, but it still contains the distinctive spirit of a traditional small town.

### THOMAS TOWNSHIP

Zip Codes: **48623, 48609, 48626**

2017 Population: **11,628**

2017 Median Household Income: **\$57,933**

2017 Median Age: **47.2**

Thomas Township offers great parks and schools, friendly neighborhoods and is business friendly. It is home to Hemlock Semiconductor, Dow HIMS and the Great Lakes Tech Park.

### CITY OF FRANKENMUTH

Zip Codes: **48734**

2017 Population: **5,038**

2017 Median Household Income: **\$49,828**

2017 Median Age: **50.6**

Frankenmuth was ranked #16 in Michigan for Livability by Area Vibes, scoring high for amenities, cost, crime and education. Frankenmuth is one of the top three tourist destinations in Michigan.

## COMMUNITIES

### TITTABAWASSEE TOWNSHIP

Zip Code: **48623**

2017 Population: **9,803**

2017 Median Household Income: **\$76,935**

2017 Median Age: **35.8**

Tittabawassee Township contains Freeland - ranked #1 for Best Cities for Young Families in MI by NerdWallet, and is home to MBS International Airport and the Freeland SportsZone.

### KOCHVILLE TOWNSHIP

Zip Codes: **48601, 48722**

2017 Population: **5,024**

2017 Median Household Income: **\$45,625**

2017 Median Age: **21.3**

Kochville borders Saginaw Valley State University and is a major Regional commercial draw with its Bay/Tittabawassee Road Corridor. Farming still accounts for nearly 75% of all land use.

### RICHLAND TOWNSHIP

Zip Code: **48626**

2017 Population: **4,009**

2017 Median Household Income: **\$58,529**

2017 Median Age: **43.2**

Hemlock is in the middle of Richland Township and includes a vibrant and growing commercial district. Residentially, there are new subdivisions just completed with new housing being built.

### BRIDGEPORT CHARTER TOWNSHIP

Zip Codes: **48601, 48722**

2017 Population: **10,096**

2017 Median Household Income: **\$40,280**

2017 Median Age: **45.7**

Bridgeport features a range of industries, including hospitality, manufacturing and agriculture. Its residents enjoy thriving businesses and comfortable community living.

### CARROLLTON TOWNSHIP

Zip Codes: **48724, 48604**

2017 Population: **5,829**

2017 Median Household Income: **\$32,190**

2017 Median Age: **32.4**

Carrollton Township was organized in 1866. Big in community spirit, Carrollton has a 24-hour / 7-day a week police department, a fully equipped on-call fire department and a K-12 Public School system.

### VILLAGE OF ST. CHARLES

Zip Code: **48655**

2017 Population: **1,990**

2017 Median Household Income: **\$43,583**

2017 Median Age: **46.9**

St. Charles has access to the Shiawassee National Wildlife refuge providing opportunities for hunting, fishing, canoeing, hiking, birdwatching and other summer and winter sports.



## COMMUNITIES

### VILLAGE OF CHESANING

Zip Code: **48616**

2017 Population: **2,382**

2017 Median Household Income: **\$37,009**

2017 Median Age: **37.3**

Located on the picturesque Shiawassee River, the Village is a traditional small American town with a charming main street. The Village's location also provides easy access to surrounding large cities.

### CITY OF ZILWAUKEE

Zip Code: **48604**

2017 Population: **1,680**

2017 Median Household Income: **\$51,875**

2017 Median Age: **35.2**

Zilwaukee is the City made famous by the "Zilwaukee Bridge," which spans the Saginaw River and facilitates the movement of 45,000+ cars daily. The City also features easy I-75 access.

### VILLAGE OF MERRILL

Zip Code: **48637**

2017 Population: **720**

2017 Median Household Income: **\$41,964**

2017 Median Age: **37.4**

Merrill provides the ideal small town lifestyle with main street shops, eateries and pubs. The close community enjoys the Merrill Farm Fest that includes a parade, an antique car show and more.

### CHESANING TOWNSHIP

Zip Code: **48616**

2017 Population: **4,475**

2017 Median Household Income: **\$44,778**

2017 Median Age: **43.7**

Chesaning Township was organized in 1847 and is 36 square miles. The Township is 25 miles from the City of Saginaw and M-57 runs through the community serving residents and business.

### VILLAGE OF BIRCH RUN

Zip Code: **48415**

2017 Population: **1,699**

2017 Median Household Income: **\$46,646**

2017 Median Age: **38.8**

Birch Run is located on I-75 and the gateway to the Great Lakes Bay Region. The Village is home to Birch Run Premium Outlets, which features over 140 stores that attracts millions of visitors.

### SPAULDING TOWNSHIP

Zip Code: **48601**

2017 Population: **2,215**

2017 Median Household Income: **\$43,125**

2017 Median Age: **43.3**

Spaulding Township is 27 square miles and home of the Shiawassee Flats National Wildlife Refuge, a 9,800 acre refuge visited by many people each year. The quaint Township is about 70% rural.

## HEALTH CARE

When it comes to medical facilities and health care, Saginaw County and the Great Lakes Bay Region are proud to boast that it provides some of the most advanced medical technologies in the nation. Saginaw County alone is home to five major hospitals that provide a wide range of treatment. Saginaw is also home to the new Central Michigan University College of Medicine.



Saginaw is the advanced multi-specialty care provider for nearly a quarter of Michigan's Lower Peninsula. This has given the Region a wealth of state-of-the-art health care facilities and some of the Midwest's most talented providers. This puts a tremendous amount of health care knowledge and experience in our own back yard, and offers a pool of employees, advisors and medical directors well-versed in nearly every specialty. It also offers medical research capabilities expected to be found only in a Top 10 market. Saginaw County is a leader in research in the neurosciences, cardiovascular health, radiation oncology and many other fields.

Saginaw County is home to more than 600 health care related providers that includes Regional hospitals – Covenant HealthCare and Ascension St. Mary's Hospital, along with the Aleda E. Lutz VA Hospital. Saginaw County also has a residency training organization for physicians called CMU Healthcare, which partners with Central Michigan University College of Medicine. Its residents rotate among CMU Healthcare member hospitals that have a combined bed capacity of nearly 1,000, and feature state-of-the-art facilities. The Field Neurosciences Institute provides a full continuum of care to neurological patients - from prevention and diagnosis to treatment and care after treatment. Great Lakes Bay Health Centers, formerly Health Delivery Inc., provides medical services without regard to race, beliefs or ability to pay. Great Lakes Bay Health serves nearly 50,000 individuals throughout 14 counties in Michigan and has 440 employees.

## ECONOMIC IMPACT OF HEALTH CARE



### EMPLOYEES

Saginaw County 28,721  
GLBR 47,618



### WAGES & SALARIES

Saginaw County \$1.6 billion +  
GLBR \$2.8 billion +



### TAX REVENUE

Saginaw County \$412 million +  
GLBR \$731 million +

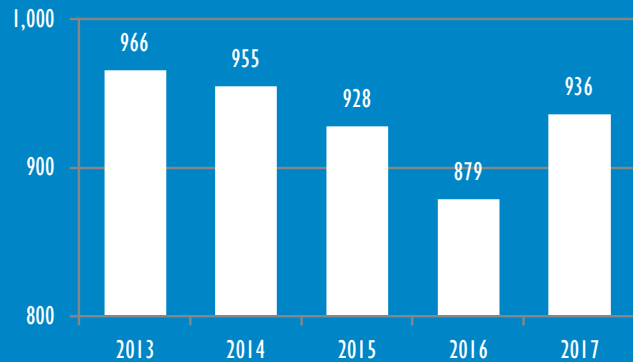
(federal, state, local - includes indirect employee earnings)

Source: The information presented here was compiled using IMPLAN® V3.1 software and 2017 data, along with 2017 data from the American Hospital Association Annual Survey (the most recent data available).

## PUBLIC SAFETY

Saginaw County is committed to fostering a world-class county by providing efficient government services and collaborating with local and state police departments, all to provide a safe environment. Success of this vision can be seen in community safety and the dramatic decline in serious crime. A targeted crime strategy has resulted in a 3.1% decline in Crimes Against Persons from 2013 to 2017.

Saginaw County Crimes Against Persons



Source: Michigan Incident Crime Reporting, Michigan State Police

Saginaw County's successful strategy is based on community policing and citizen-police partnerships that work together in neighborhood problem solving. Working together, both the citizens and police develop shared ownership and accountability for their neighborhood and community, thereby developing pride that translates into active citizenship.

Since December 2013, there are 26 Michigan State Police (MSP) troopers, including command staff and members of special task forces, assigned specifically to the City of Saginaw. Stepped-up enforcement efforts and cooperation by the MSP and the Michigan Department of Corrections alongside local partnerships with county sheriffs, jails, prosecutors and judges for the reduction has been credited with the success. The MSP also added a third helicopter that is based in Saginaw part of the "Secure Cities Partnership" initiative to reduce crime in Michigan.

Four communities in the Great Lakes Bay Region are on the top 100 list for "The Safest Cities in Michigan 2019" by the National Council for Home Safety and Security. They are:

- City of Midland #48
- Thomas Township #64
- Saginaw Charter Township #92
- City of Bay City #99.

To identify the safest cities in Michigan, the National Council for Home Safety and Security reviewed the most recent FBI Uniform Crime Report statistics along with its own population data and



internal research. It eliminated any cities that failed to submit a complete crime report to the FBI and removed cities with populations under 10,000.







# WATER & WEATHER

The Great Lakes Bay Region is the **largest watershed in Michigan**, making it a place rich with natural resources. The **Saginaw River** and eight different rivers intertwine and drain into the **Saginaw Bay**, which is connected to **Lake Huron**.

The **Great Lakes** represent 84% of the fresh water in North America and the **largest freshwater system on Earth**.

Saginaw, MI, gets 30 inches of rain per year. The US average is 37. Snowfall is 37 inches. The average US city gets 25 inches of snow per year. The number of days with any measurable precipitation is 115.

On average, there are 174 sunny days per year in Saginaw, MI. The July high is around 83 degrees. The January low is 15. Our comfort index, which is based on humidity during the hot months, is a 47 out of 100, where higher is more comfortable. The US average on the comfort index is 44.

- January average minimum temperature: 14°F
- January average maximum temperature: 27°F
- July average minimum temperature: 60°F
- July average maximum temperature: 82°F
- Average rainfall: 30 inches
- Average growing season: 163 days



# SPORTS & RECREATION

**Minor League Sports** – With a national reputation for great sports, top-notch facilities and youth-friendly hospitality, Saginaw County offers the best of all worlds for your sporting event. We're home to two professional sports teams – the Ontario Hockey League's Saginaw Spirit and the Los Angeles Dodgers' Class "A" Mid West League affiliate Great Lakes Loons.

**Wildlife and Fishing** – Saginaw County is home to the 9,800 acre Shiawassee National Wildlife Refuge and fabulous river-based events. With the largest confluence of rivers east of the Mississippi River – we're home to one of the largest natural fish production areas in the country and fishermen flock to our rivers and Bay to enjoy many sport-fishing opportunities. Saginaw County is a popular destination for nature enthusiasts eager to participate in birding, fishing, boating, hunting and paddle sports.

**Great golf is here!** – Tee up in Saginaw and the Great Lakes Bay Region, where long fairways, rolling hills, and challenging greens await at more than 20 golf courses. We're proud to be home to three championship courses: Apple Mountain – Freeland, The Fortress – Frankenmuth, and the Sawmill – Saginaw.

**Saginaw Soccer** – Sports are big business in the Great Lakes Bay Region and the Saginaw Township Soccer Complex is the largest premier complex in the Region offering 21 regulation fields. Saginaw was selected to host the 2019 US Youth Soccer Region II (Midwest) Championships as part of the US Youth Soccer National Championship Series, the country's oldest and most prestigious national youth soccer tournament.

**Bowling in Saginaw County** – With more than 170 bowling lanes, an abundance of billiard tables and dart boards, this Region is a high-energy destination for tournaments and competitions in these popular sports.

**Great Lakes Bay Regional Trail** – The Regional system spans nearly 100 miles of safe, paved, and accessible trails for walking, running, biking or blading. Access maps, trailheads and amenity information at [www.greatlakesbaytrails.com](http://www.greatlakesbaytrails.com)





# ARTS & CULTURE

Saginaw County and the Great Lakes Bay Region provide many unique arts & cultural opportunities. Built in 1927, the historic **Temple Theatre** in Downtown Saginaw features a classic Barton pipe organ and shows the best in classic movies, art films, concerts and the **Saginaw Bay Symphony Orchestra**. Every year, Saginaw's **Pit and Balcony** hosts a series of plays in its own 289-seat theater.

The area has a number of additional cultural attractions including the **Japanese Cultural Center and Tea Garden**, and local artists display their work at the **Andersen Enrichment Center**. In **Frankenmuth**, Michigan's #3 tourist destination, visitors enjoy the German atmosphere found year round in the downtown shops and restaurants.

**TheDow Event Center's** 7,600 seat Wendler Arena is home to the Saginaw Spirit Hockey Club (a member of the Ontario Hockey League) and its 2,200 plus seat **Heritage Theater** has hosted entertainers from Sesame Street Live to Jerry Seinfeld. Summer would not be complete without outdoor concerts on **Ojibway Island** and the Saginaw Fireworks and ArtSaginaw is an online resource for Saginaw art programs. Saginaw County celebrates its past and culture through its museums and galleries. Saginaw Valley State University houses the **Marshall M. Fredericks Sculpture Gallery**, a permanent collection of more than 200 works by the world famous sculptor. The gallery also hosts monthly art exhibits by students, faculty and guest artists.

The **Castle Museum of Saginaw County History** contains artifacts from the area, as well as traveling exhibits from the Smithsonian Institution. The **Saginaw Art Museum** is another Saginaw County treasure that display everything from Ancient Near Eastern ceramics to contemporary paintings. The **Military and Space Museum in Frankenmuth** has a tank and F-4 jet on display, as well as military uniforms and information on Michigan war veterans.

Go to [www.GoGreat.com](http://www.GoGreat.com) for more information!





# SHOPPING & ENTERTAINMENT

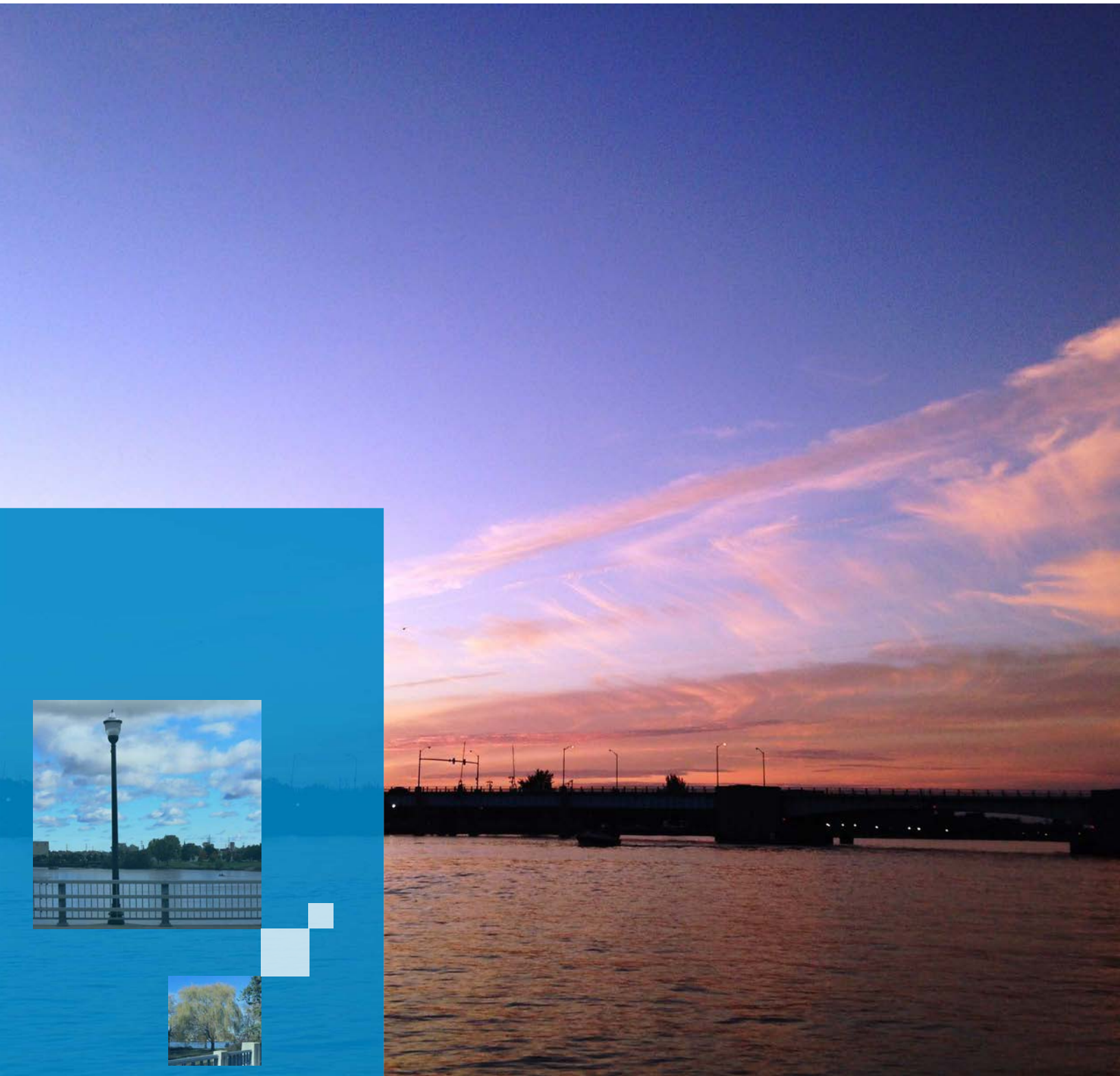
Saginaw is 21 on the **Expedia favorite medium & small towns to visit** in the US list. Saginaw County features numerous shopping options from traditional downtown districts and boutiques to shopping malls. **Frankenmuth** offers a number of restaurants and shops with Bavarian appeal and world famous chicken. **Birch Run Premium Outlets** is a large outlet mall boasting over 145 brand name stores. The Fashion Square Mall is the cornerstone for the Bay and Tittabawassee Road Corridor shopping district, which recently welcomed new attractions, retail shopping and dining opportunities.

Enjoy musicals, plays and entertainers at **TheDow Event Center** and the historic **Temple Theatre** in Downtown Saginaw. Saginaw County is home to a wide array of entertainment venues like the outdoor Huntington Event Park across from TheDow. Go ziplining at **Frankenmuth Aerial Park**, take a scenic Michigan ecotour with Johnny Panther Quests Adventure Trips, or bike with Sunrise Pedal Trolley or PedAle Trolley on a Michigan beer tour.

Visit the **SVRC Marketplace** to support local entrepreneurial development, unique eateries, small businesses and one of a kind retail shops in the Riverfront Saginaw community.

The **Children's Zoo** is a Regional destination celebrating Nature, Wildlife, and Lifelong Discovery and the **Mid-Michigan Children's Museum** provides affordable and engaging experiences. Many Saginaw County communities offer fun and unique entertainment opportunities!

Go to [www.GoGreat.com](http://www.GoGreat.com) for more information!



[www.saginawcounty.com](http://www.saginawcounty.com)



saginaw  
FUTURE

[www.SaginawFuture.com](http://www.SaginawFuture.com)



PURE MICHIGAN®  
Michigan Economic Development Corporation

[www.michiganbusiness.org](http://www.michiganbusiness.org)

